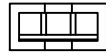


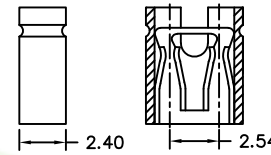
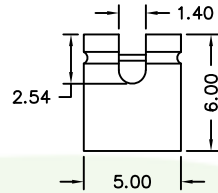
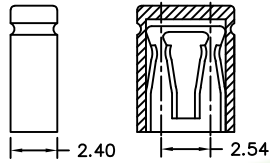
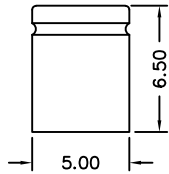
A TYPE= CLOSE 6.5



B TYPE= OPEN 6.0

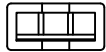
MATERIAL

Insulator : 30% Glass fiber PBT (D type: NYLON 66)

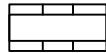


SPECIFICATION

Current Rate : 3 AMP PER PIN
Insulation Resistance : 5000MΩMin. at DC 500V
Contact Resistance : 20mΩMax. at DC 100mA
Dielectric Voltage : 500V AC for one minute
Operation Temperature : -55°C to +105°C

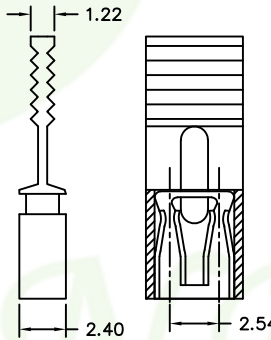
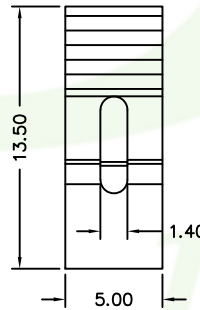
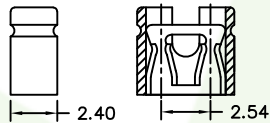
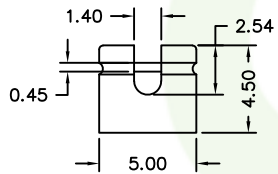


C TYPE= OPEN 4.5

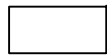


D TYPE= W HANDLE 13.5

200-x 1- x x x x xx
1 2 3 4 5 6



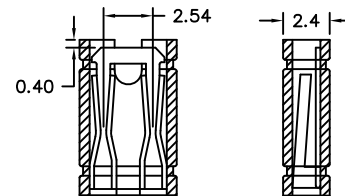
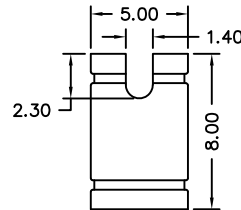
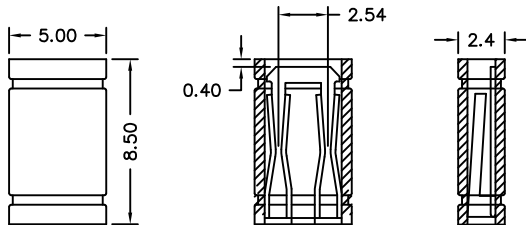
- 1. 7: Green Product
- 9: Green Product High Temp
- 2. B: Brass
- P: Phosphor Bronze
- 3. A: A type
- B: B type
- C: C type
- D: D type
- E: E type
- F: F type
- 4. G: Gold flash
- T: Tin plated
- 5. B: Black Insulator
- R: Red Insulator
- U: Blue Insulator
- 6. Pinrex internal code.



E TYPE= CLOSE 8.5



F TYPE= OPEN 8.0



		TOLERANCE				OLD PART NO.		TITLE	
		.0 =±.30		UNITS : mm		DRAWER		MINI JUMPER 2.54mm	
		.00 =±.20		SCALE NONE		CHECK		NEW PART NO.	
		.000 =±.XXX		SIZE A4		APP'D		200-x1-xxxxxx	
A RELEASE		2005/06/08		SHEET 1 OF 1		REV. A		DRAW NO.	
REV. DESCRIPTION		DATE		ANG.=±3'				200-x1-xxxxxx (網頁專用圖)	

頻銳科技股份有限公司
PINREX TECHNOLOGY CORP.